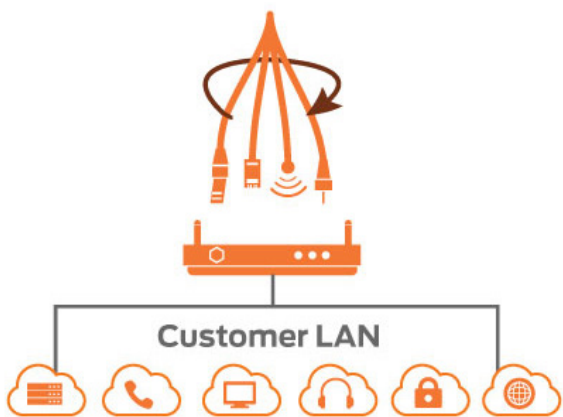
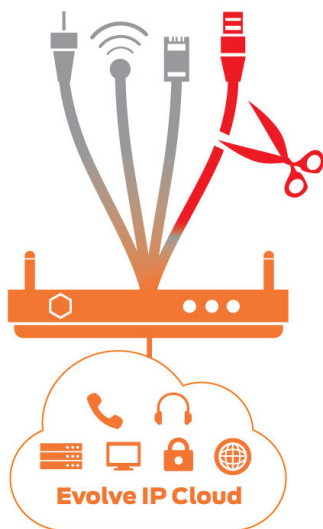


## Cloud Connect

Evolve IP's Cloud Connect enables enterprises to combine the bandwidth of multiple public connections (from nearly any carrier) into a single, faster, more reliable virtual connection. It allows businesses to securely access Evolve IP's Cloud and the Internet and replace expensive WAN connections.



How it Works



Immediate State Failover

As enterprise applications are migrating to the cloud, customers are demanding more bandwidth and guaranteed quality of service. With the rise in traffic, and business expectations for security, mobility and flexibility to deliver any application at any time, network professionals are realizing that traditional network-delivery is not enough. With Evolve IP's Cloud Connect, organizations can achieve all this while maximizing network performance and minimizing costs.

### Why Cloud Connect?

Cloud Connect is delivered, managed and supported by Evolve IP, regardless of who delivers the connections to your office, ensuring your business can access its critical cloud-based resources whenever they are needed. By bonding your multiple connections, Cloud Connect:

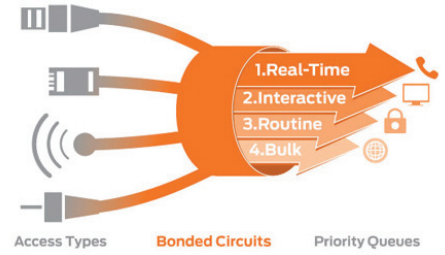
- Dramatically increases your network speed
- Increases reliability with automatic failover
- Provides bi-directional QoS over public networks
- Provides a cost effective alternative to MPLS networks
- Offers real-time statistics and performance updates

### Features and Benefits

- **Network Bonding:** Traffic to and from your network goes through a server that distributes the data among the individual connections in the bond.
- **Aggregation and Compression:** Use a combination of DSL, cable, fiber, fixed or mobile wireless, T1, etc. Cloud Connect makes available the total combined bandwidth of all connections and compresses traffic.
- **Immediate Stateful Failover:** Cloud Connect streams at the packet level vs. session level enabling the device to intelligently select new paths and re-route data when it identifies network degradations and outages.
- **Enterprise Security and Encryption:** Cloud Connect encrypts communication between the appliance and our network and authenticates all bonded traffic back to Evolve IP's cloud.

# Network Solutions: SD-WAN

- **Dynamic Allocation of Bandwidth:** Cloud Connect provides better Quality of Service (QoS) over internet. Cloud Connect also prioritizes your critical application traffic between the local appliance and Evolve IP’s core which acts as your central on-ramp to the Internet.
- **Backup for Your Backups:** Cloud Connect also supports a single dedicated failover connection, which is used only when all the other connections in the bond have failed.
- **Real-time Statistics and Performance Metrics:** With Cloud Connect’s newly designed customer admin portal, customers now have the ability to monitor real-time statistics and historical performance metrics for each location.



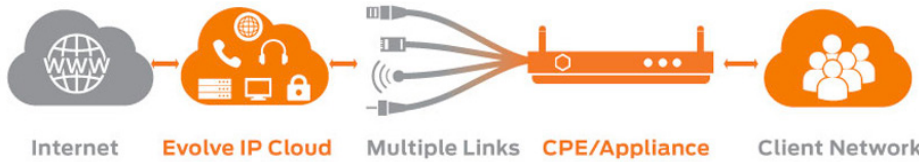
QoS Over Internet

## How it Works

Traffic bound for the client network first passes through the Evolve IP Cloud where the data stream is divided, each packet routed independently through one of your individual Internet connections.

When the packets reach the CPE, they are recombined into the original data stream and forwarded to the client network.

Traffic from the client network takes the opposite path: the bonding appliance distributes the traffic across your connections and it is recombined in the Evolve IP Cloud before being sent to the destination host.



## Cloud Connect Customer Admin Portal

The Cloud Connect Customer Admin Portal is designed to provide customers with real time statistics and performance updates on each location. It provides customers with the ability to monitor the performance of their internet circuits.

Bond ID	Name	Space	Legs	Current aggregator	Version	Options	Download	Upload	Status	Connected IP	Actions
156	Allentown	EvolveSite	● ● ● ● ●	EvolveIP-Agg03	2015.3.35	P	↓ 5.72 Mbps	↑ 403.5 kbps	●	10.202.178.76, 2 others	Q
80	Cleveland Office	EvolveSite	● ● ● ● ●	EvolveIP-Agg02	2015.4.28	P	↓ 340.19 kbps	↑ 322.93 kbps	●	172.18.188.204	Q
7	NOC_Lab	EvolveIP_Lab	○ ● ● ● ●	EvolveIP-Agg08	2016.1.26	P	↓ 3.85 kbps	↑ 5.27 kbps	●	10.202.178.76, 2 others	Q
10	Schaumburg	EvolveSite	● ● ● ● ●	EvolveIP-Agg02	2015.4.21	P	↓ 28.67 kbps	↑ 133.1 kbps	●	172.18.188.204, 2 others	Q
41	WebCore_Austin	EvolveSite	● ● ● ● ●	EvolveIP-Agg03	2014.4.11	P	↓ 458.27 kbps	↑ 402.93 kbps	●	172.18.188.204, 1 other	Q

With this new portal, customers have the ability to drill down into each location and track the performance and status of each leg. Also, the portal offers performance graphs that allow customers to view the real-time and historical metrics on speeds, jitter, latency and more for each leg.

## REPLACE YOUR TRADITIONAL WAN

Replace complicated Firewall/VPN devices and expensive (and slow) MPLS connections. Cloud Connect sites can privately access other Cloud Connect locations, and can be integrated with legacy MPLS or private locations on the Evolve IP Network, forming a flexible, hybrid WAN.

**REDUCE WAN COSTS BY 52%**  
**INCREASE BANDWIDTH BY 400%\***

\*Based on a recent deployment of an enterprise customer with 52 sites distributed across North America bonding ADSL (1.54Mbps) and CABLE (6 Mbps). Average monthly recurring cost for Carrier MPLS (four sites connected via Internet) was \$732.84. Average per-site bitrate for Carrier MPLS solution was 1.72Mbps. Cloud Connect solution had a per site average MRC of \$350.81 and delivered an average per site bandwidth bitrate of 7.35Mbps.